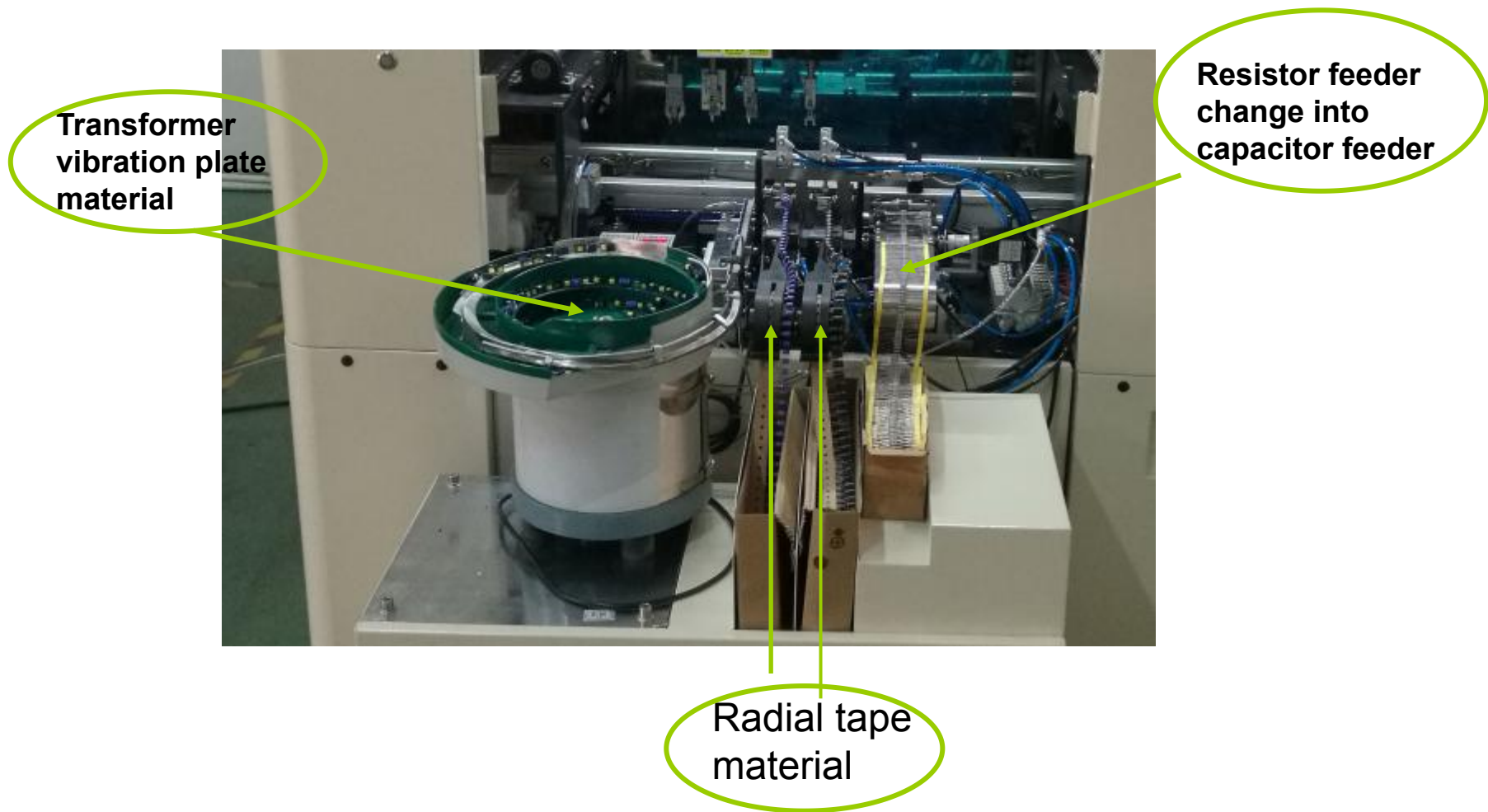


Shenzhen Southern Machinery Auto Insertion Solution

1. Odd Form Insertion Machine Appearance



2. Odd Form Insertion Machine Specs

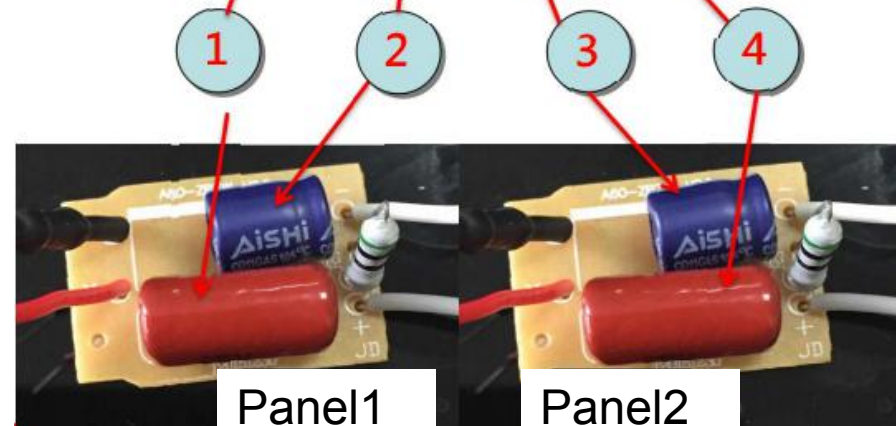
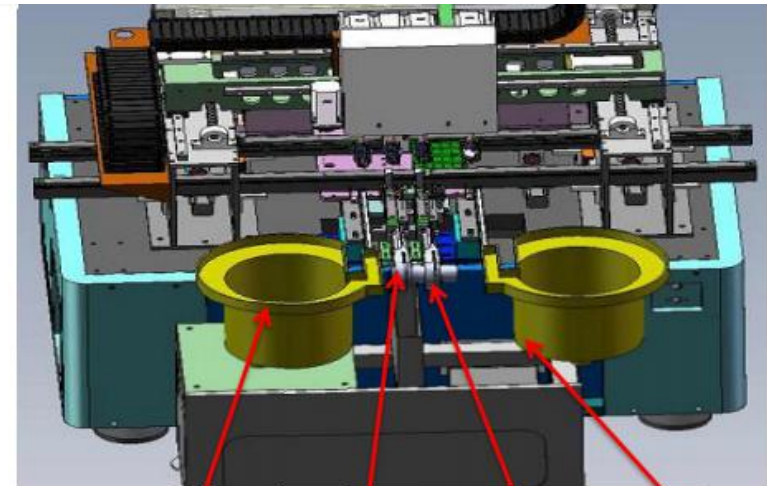
1 Insertion head :4heads
2 Feeder Qty: 4pcs; (Tape or vibration adjustable)
3 Insertion Speed: 4000CPH
4 Insertion accuracy: $\pm 0.05\text{mm}$
5 Component size: 3*3-30*30mm
6 Component height: 50mm
7 PCB size: 50*50-300*300mm
8 PCB thickness: 0.8-5.0mm
9 Dimension: (L*W*H) 1200*1100*1600mm
10 Machine weight : 1000kg
11 Power supply: 220V,AC 0.8KVA (Save power)
12 Air pressure: 0.4-0.6MPa
13 Machine noise: 75 decibel



3.1.1 Product's analysis and insertion solution

- Capacitor and Resistor in one (Axial E-CAP insertion)

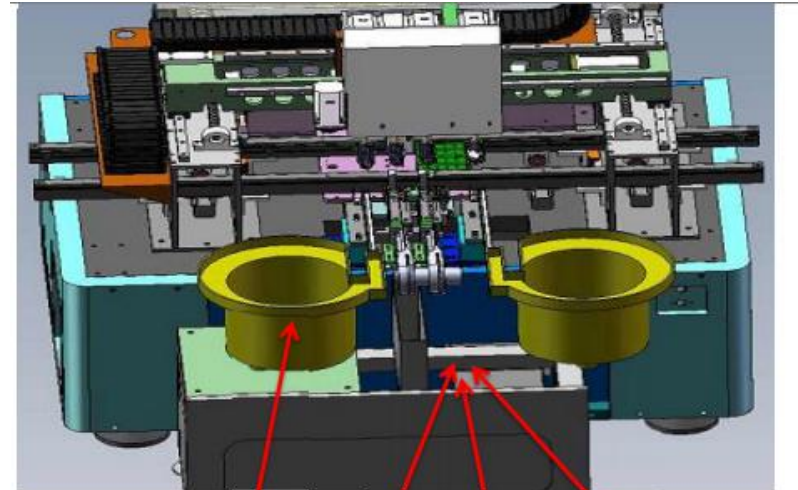
Capacitor and E-CAP insertion		
Item	component name	Feeding method
1	Radial capacitor insertion panel 1	Vibrator
2	Axial E-CAP insertion panel 1	Tape
3	Axial E-CAP insertion panel 2	Tape
4	Radial capacitor insertion panel 2	Vibrator



3.1.2 Product's analysis and insertion solution

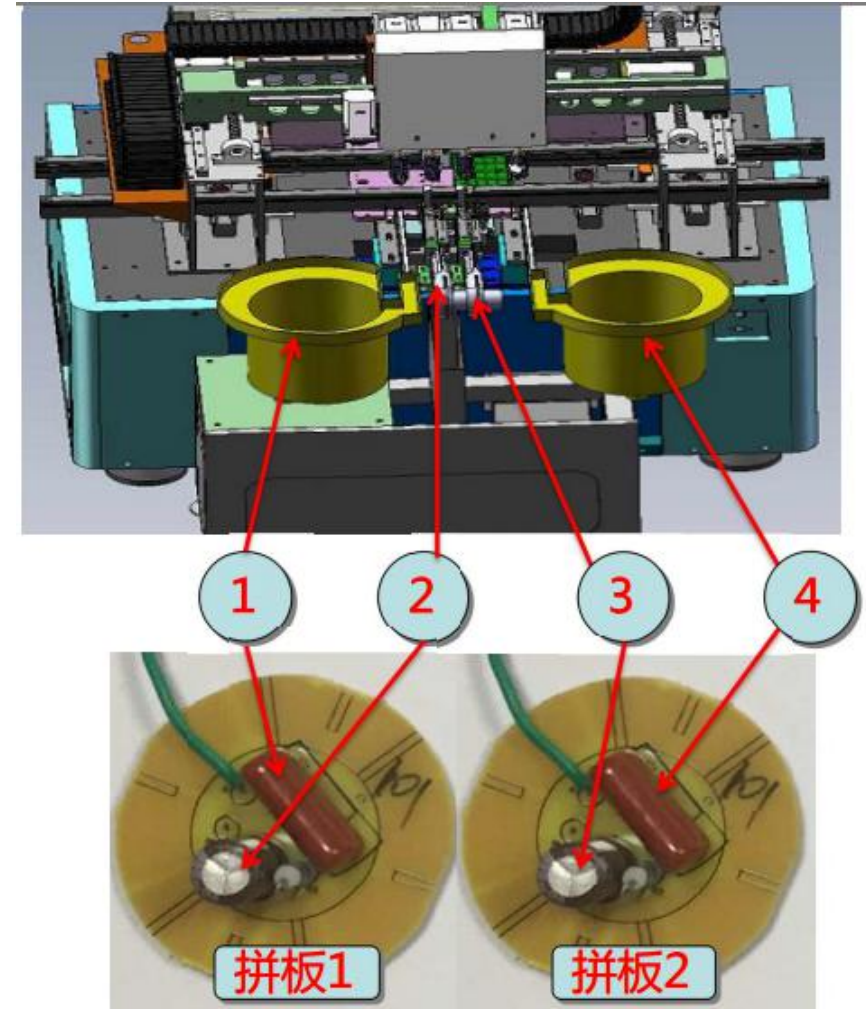
- Capacitor and Resistor in one (Radial E-CAP insertion)

Capacitor and E-CAP insertion		
Item	component name	Feeding method
1	Radial capacitor insertion panel 1	Vibrator
2	Radial E-CAP insertion panel 1	Tape
3	Radial E-CAP insertion panel 2	Tape
4	Radial capacitor insertion panel 2	Vibrator



3.2 Product's analysis and insertion solution - Optoelectronic integration

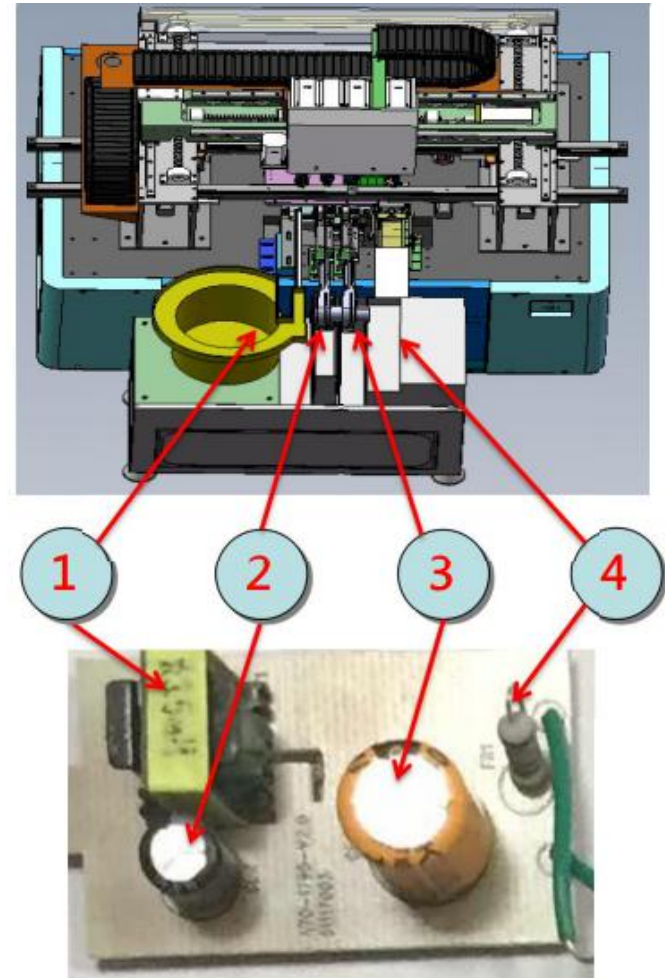
Capacitor and E-CAP insertion		
Item	component name	Feeding method
1	Radial capacitor insertion panel 1	Vibrator
2	Radial E-CAP insertion panel 1	Tape
3	Radial E-CAP insertion panel 2	Tape
4	Radial capacitor insertion panel 2	Vibrator



3.3 Product's analysis and insertion solution - IC Power

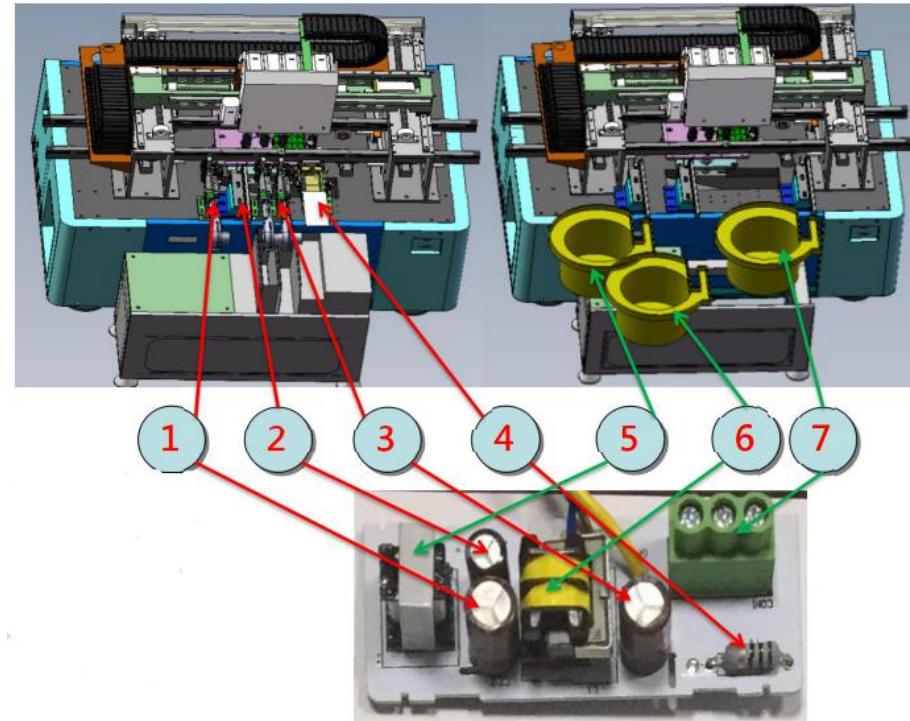
Solution		
Item	component name	Feeding method
1	Inductance	Tape
2	Radial E-CAP insertion	Tape
3	Radial E-CAP insertion	Tape
4	Radial resistor insertion	Tape

Noted: Radial resistor
insertion speed: 3800CPH

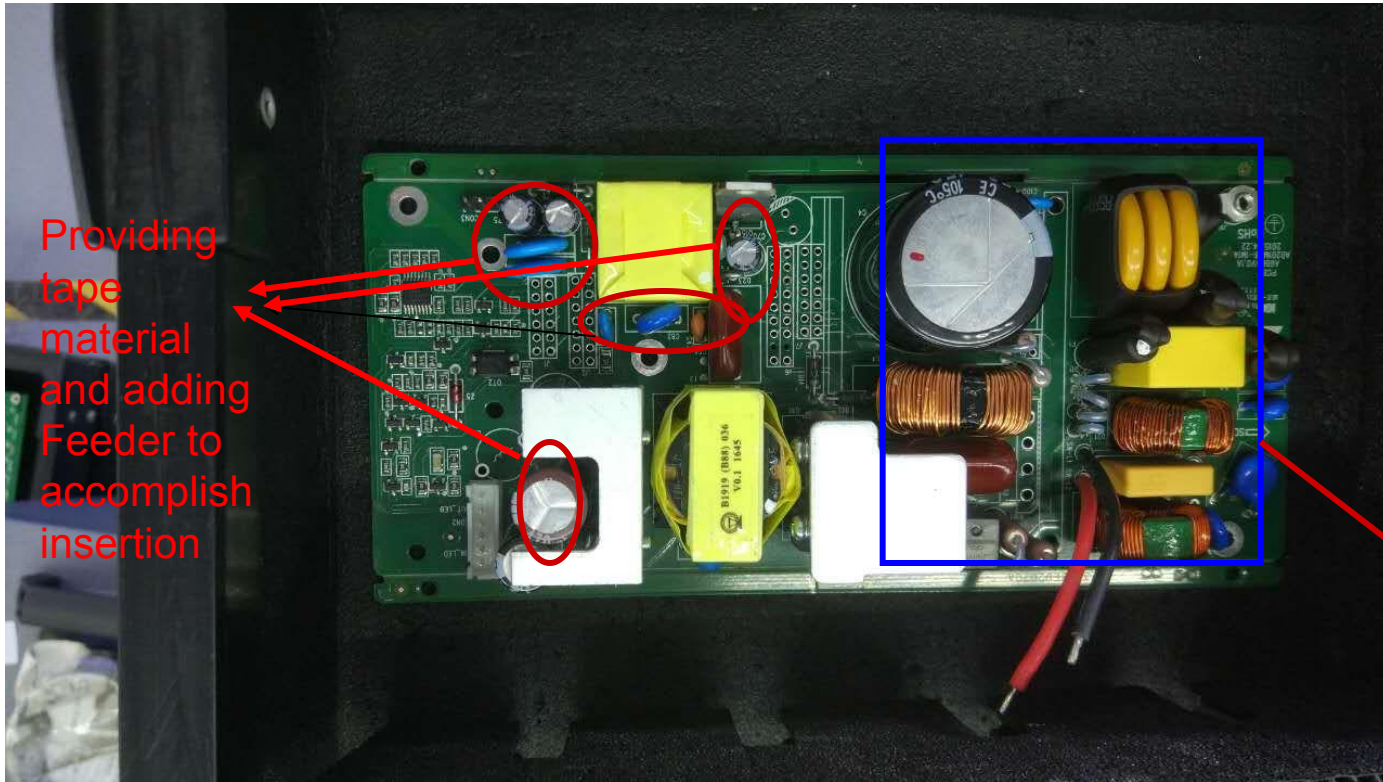


3.3 Product's analysis and insertion solution - Lamp

Insertion Solution		
Item	component name	Feeding method
1	Radial E-CAP insertion	Tape
2	Radial E-CAP insertion	Tape
3	Radial E-CAP insertion	Tape
4	Axial resistor insertion	Tape
5	Inductance	Vibrator
6	Inductance	Vibrator
7	Inductance	Vibrator



Conclusion



Providing
tape
material
and adding
Feeder to
accomplish
insertion

To provide a
multi-layer
tube with a
tube material
to achieve
automatic
feeding
insertion

Welcome inquiry

1, Please visit : www.smthelp.com

2, Find us more: <https://www.facebook.com/autoinsertion>

3, Know more our team:
<https://cn.linkedin.com/in/smtsupplier>

4, Welcome to our factory in Shenzhen China

5, Google: Auto+Insertion

6, Looking forward to your email:
jasonwu@smthelp.com